

Southwest Thought Partner Group

Meeting #2

Tuesday, June 9, 6:00 pm – 7:30 pm

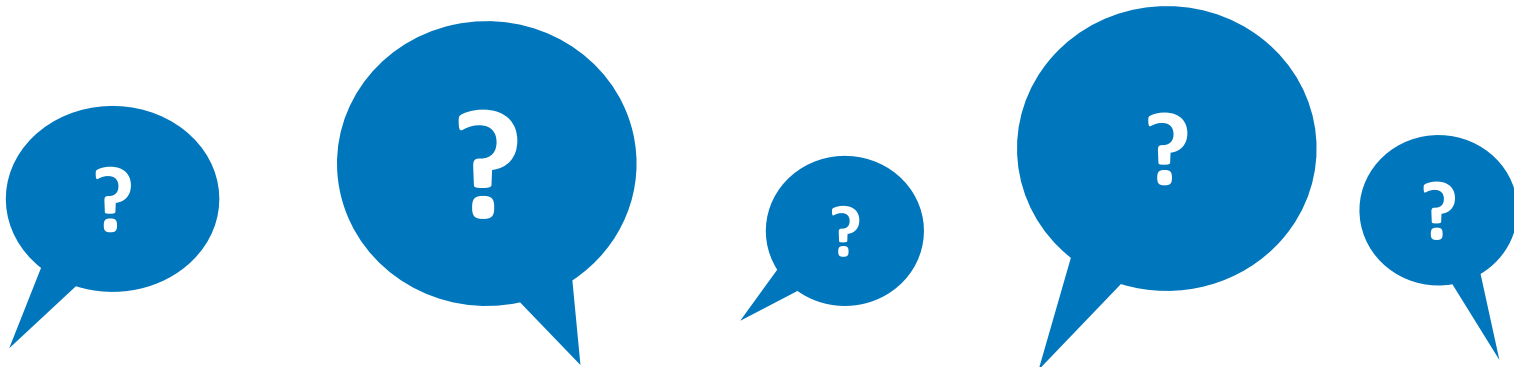


Benjamin Roldan

DPS FACE

Agenda

- Welcome and introductions
- Overview of process
- Engagement with elementary
- Schools tours
- Applicant presentation
- Discussion
- Next Steps and Q&A



What is a Thought Partner Group?

- Will advise the district and the applicants for new schools about the specific characteristics desired by the community
- Will generate pros and cons of applications from school leaders interested in serving these communities
- Can positively influence the future of middle school programs in the Southwest



Charge and Deliverables

Charge:

- Act as community **thought partners**, in collaboration with district leadership and applicant/current school leadership, **by providing specific pros and cons** of any school program proposal presented to the community for the 2016-2017 school year and beyond.

Deliverables:

By June 2015, FACE will deliver to DPS staff and make available to applicants the outcomes from high-level visioning in the 2 zones:

- Key qualities 4th grade families would like to see for a high-performing middle school at Henry during the 2016-2017 school year and beyond
- Key qualities families would like to see for a high-performing middle school to be co-located at Lincoln HS during the 2016-2017 school year and beyond

By September 8, 2015, the Thought Partner Groups will have a written recommendation to district staff detailing:

- Specific pros and cons of any school program proposal presented to the community via the amended Call for New Quality Schools for the 2016-2017 school year and beyond



Need for New Middle Schools



- Higher demand for first-choice, high-quality options than are currently available in the area
- Extra space on Lincoln campus
 - Opportunity to house a needed middle school program



Need for New Middle Schools



Low enrollment + low performance



Existing program will phase out while new program will phase in



Current Henry students will get additional supports:

- Increased math support
- Positive school culture and No Nonsense Nurturing
- New family and student support programs specifically targeted for middle school students

	15-16	16-17	17-18	18-19
Henry Legacy	6 + 7 + 8	7 + 8	8	-----
Incoming Program	<i>Planning year</i>	6	6 + 7	6 + 7 + 8



Timeline

April

» Meetings at elementary schools

May

» Call supplement is announced

» Thought Partner Groups begin to meet

» School tours begin

June

» School applicants present to thought partner groups

July

» Applicants present applications

» Thought partner groups present recommendations on school applications to the Board of Education

» District reviews applications

August

September

» Board of Education votes on new programs – September

October

» Board of Education votes on placement of programs

November

Southwest Middle School Visioning: Engagement

Teaching • Leadership • Education Program
Culture • Governance

The meetings began on April 16, 2015 until the end of the school year.

- Meetings hosted: at 16 Elementary schools in the Southwest.
 - College View, Johnson, Godsman, Gust, Kaiser, Traylor, Munroe, Force, Kunsmiller, Valverde, Knapp, Sabin, CMS, Castro, Schmitt, Goldrick
 - Total number of participants: **155**

Participants were asked to list what they felt were the necessary characteristics of a middle school. The answers haven been collected and coded to better categorize the responses into the five factors of a successful school.

Southwest Middle School Visioning: Results

Teaching • Leadership • Education Program
Culture • Governance

- Bilingual teachers
- Teachers who believe in students
- Experienced, successful principal
- Professional development for leaders
- Restorative discipline programs and bullying preventing
- Culture of high expectations
- Social and emotional learning
- Opportunities for high academic performance
- Parent involvement process for decision making

Monica Arredondo

Parent

What did we observe?



Chris DeWitt

*Manager of New Schools
Denver Public Schools*

Facility Allocation Policy

- Policy approved by the Board that outlines what programs are placed at which facilities
- Policy outlines four factors:
 - Student Growth and Achievement
 - Alignment with Priority Needs
 - Enrollment Demand
 - Supplemental Criteria
- The Board considers these factors when deciding where a school program should be placed.



Applicant Presentation

Facility Applicants

Marcia Fulton



COMPASS ACADEMY
Where Learning & Leaders Grow

Christine Nelson

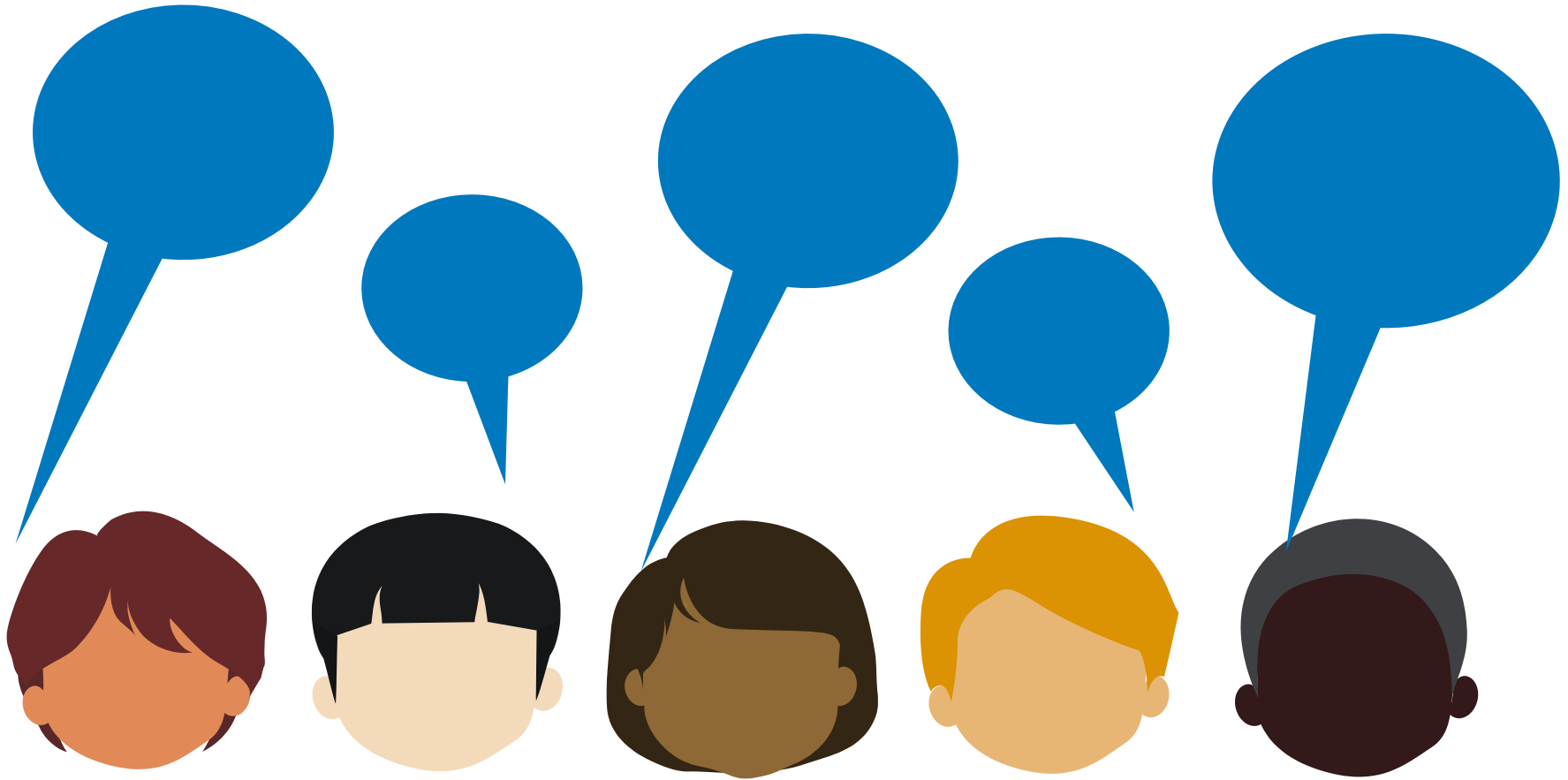


New School Applicants

Lincoln Dual Language Middle School

District Sponsored Redesign Plan for Henry World School

Feedback



Group Discussion

Teaching • Leadership • Education Program
Culture • Governance



First Day of School



Questions



Tools and Next Steps



- Set a date and time for next meetings
 - Every other Tuesday from 6:00 to 7:30 pm?
- Next meeting's topics:
 - English Language Acquisition (ELA)
 - Discipline and Behavior Supports
 - Academic Supports
 - Facilities
 - Facilitator Training
 - Other ideas?
- Share information with families, neighbors, school community
 - Discuss how to share information out
 - Inviting to visit our website
 - To call us with questions

